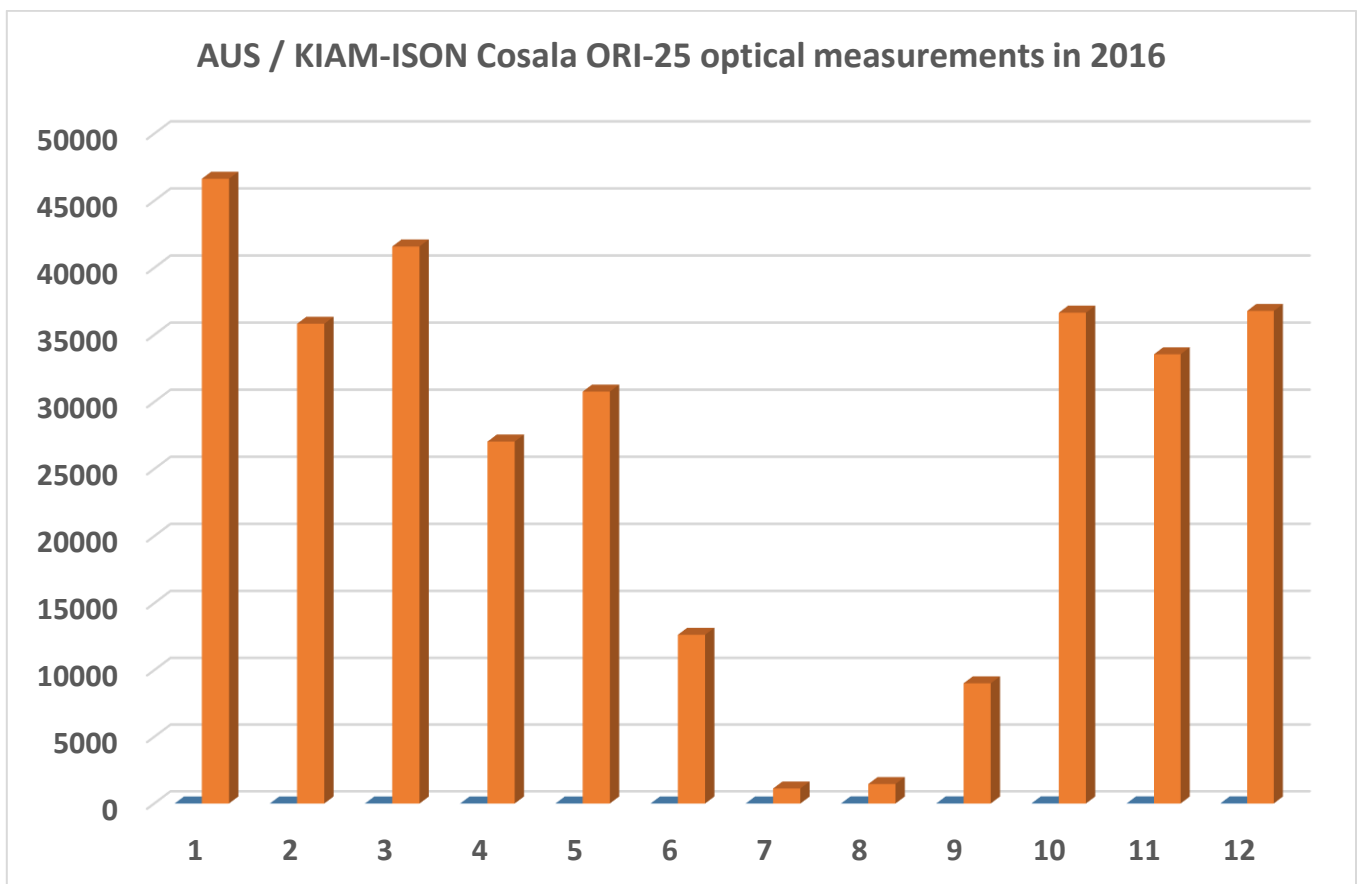


## AUS / KIAM-ISON Cosala ORI-25 optical measurement statistics in 2016

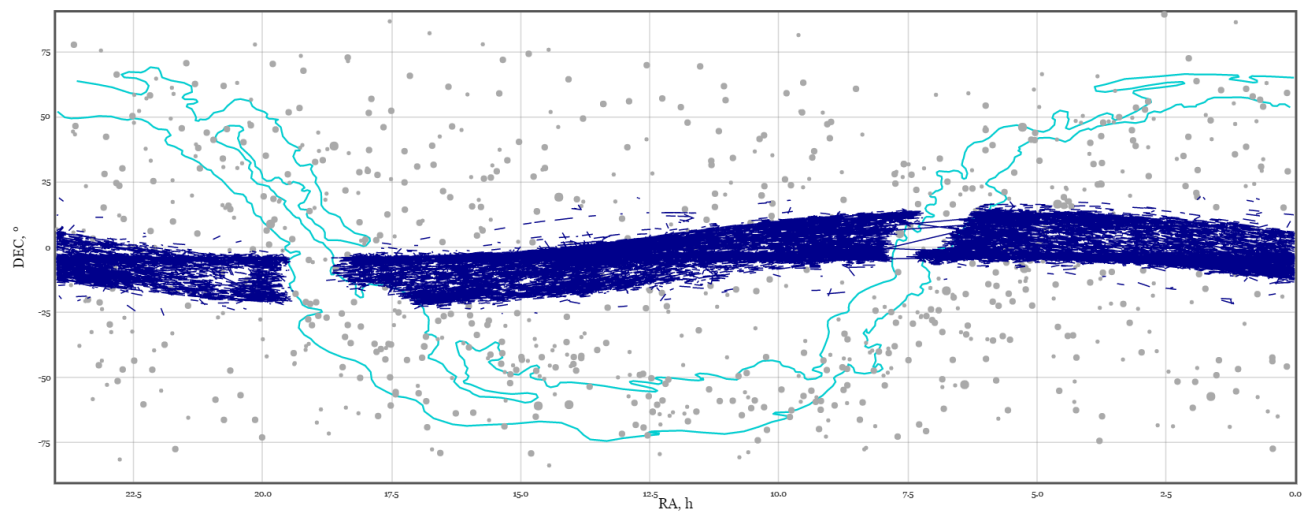
Month	Nights	Tracklets	Measurements
01	20	6841	46638
02	15	4878	35831
03	15	5471	41591
04	15	3533	27048
05	20	4300	30771
06	9	1812	12643
07	2	184	1127
08	2	209	1461
09	8	1326	9006
10	18	4877	36654
11	18	4554	33551
12	17	5165	36785
<b>Total</b>	<b>159</b>	<b>43150</b>	<b>313106</b>



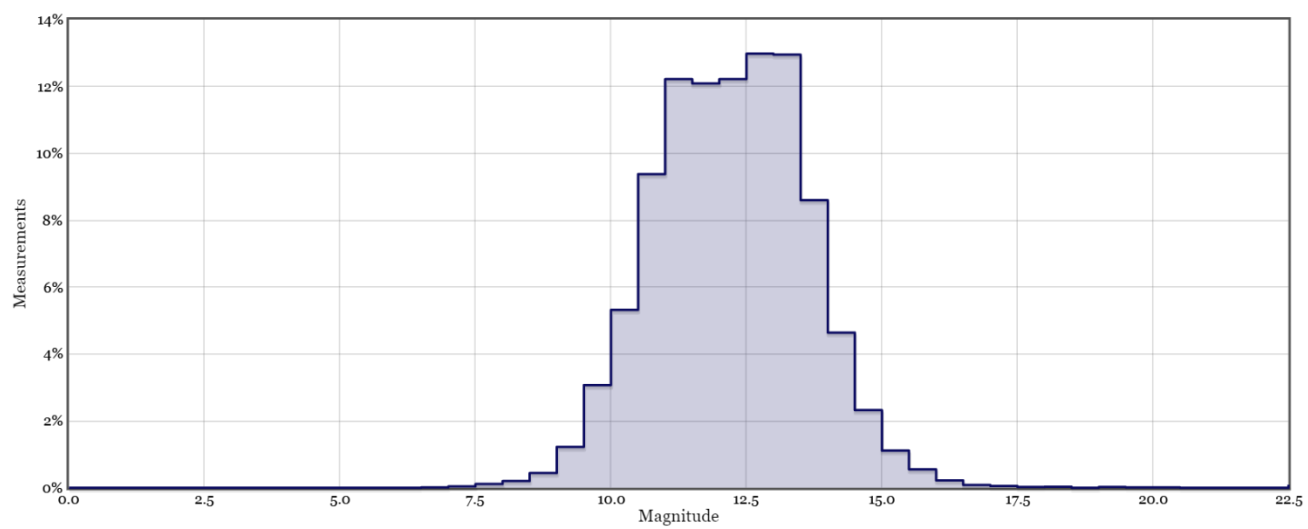
**Table of the effectiveness of ISON 25-cm-class telescopes in 2016**

<b>Longitude</b>	<b>Telescope</b>	<b>Tracklets</b>	<b>Measurements</b>	<b>Nights</b>	<b>Work mode</b>
44.27 E	Byurakan EOP 1.2 ORI-25	60396	564020	172	GEO Plane Search
34.01 E	Nauchniy EOP 1.3 Santel-250	54960	526136	219	HEO Follow-up
42.65 E	Kislovodsk EOP 1.1 ORI-25	41113	404271	145	GEO Plane Search
106.61 W	Cosala ORI-25	43150	313106	159	GEO Rating Search
34.01 E	Nauchniy EOP 1.3 Santel-250	32756	300964	222	HEO Follow-up
64.62 W	Tarija ORI-25	25774	206156	152	GEO Rating Search
132.07 E	Artem ORI-25	28117	201933	98	GEO Plane Search
132.17 E	Ussuriysk GAS-250	16668	147345	139	GEO Follow-up
127.48 E	Blagoveshensk ORI-25	14156	123457	235	HEO Follow-up
29.59 E	Tiraspol ORI-25	14197	116637	102	GEO Rating Search
100.31 W	Monterrey ORI-25	10455	73114	27	GEO Plane Search
36.94 E	Chuguev ORI-25	8045	72077	75	GEO Rating Search
37.59 E	Abrau-Durso ORI-25	7108	62234	36	GEO Plane Search
42.65 E	Kislovodsk ORI-25	6279	53779	128	HEO/LEO Follow-up
83.77 E	Barnaul TAL-250	4260	31179	114	GEO Follow-up
22.45 E	Uzhgorod BRC-250	4796	30094	78	HEO Follow-up
39.03 E	Krasnosdar MAK-254	1826	9875	89	HEO/LEO Follow-up
158.52 E	Elisovo Meade-25	36	261	3	GEO Follow-up

## 10275 ORI-25 GEO coverage in 2016 (RA-Dec)



## 10275 ORI-25 GEO magnitude distribution



**ORI-25 Cosala new and *re-finded* GEO/non-GEO objects in 2016**

Temporary Number	Date	Major Self- axis, km	Inclination, deg	Eccentricity	Area-to- Mass Ratio	Magnitude
62900	15 02 2016	24342.1	8.115	0.712361	0.052	16.0
45802	16 02 2016	42670.2	15.468	0.025406	2.060	13.9
59701	29 02 2016	23472.3	7.549	0.700030	0.084	16.2
49302	14 03 2016	20723.7	7.285	0.65196	0.469	16.1
84200	15 03 2016	29610.9	23.359	0.72824	0.182	13.6
74000	15 03 2016	27182.0	28.549	0.74370	0.082	15.7
143319	21 06 2016	42068.0	3.818	0.50948	19.10	15.1
143732	15 08 2016	42194.5	7.649	0.33764	10.00	15.9
72200	30 08 2016	26726.6	4.205	0.20905	0.063	15.5
143502	27 09 2016	42467.5	15.012	0.00014	0.001	12.1
41001	07 11 2016	13102.8	7.446	0.49767	0.135	14.0
137002	02 01 2017	40878.7	3.193	0.21118	1.880	16.3